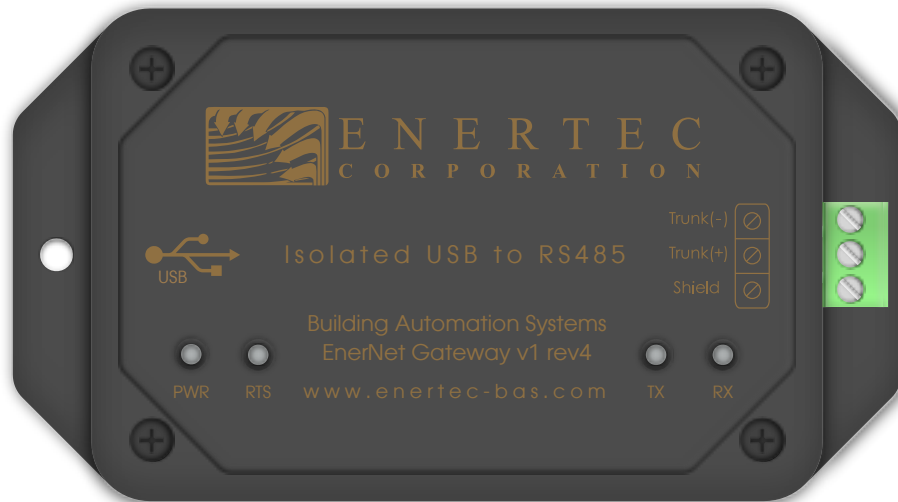


EnerNet Gateway v 1.41

Isolated USB to RS-485 Converter



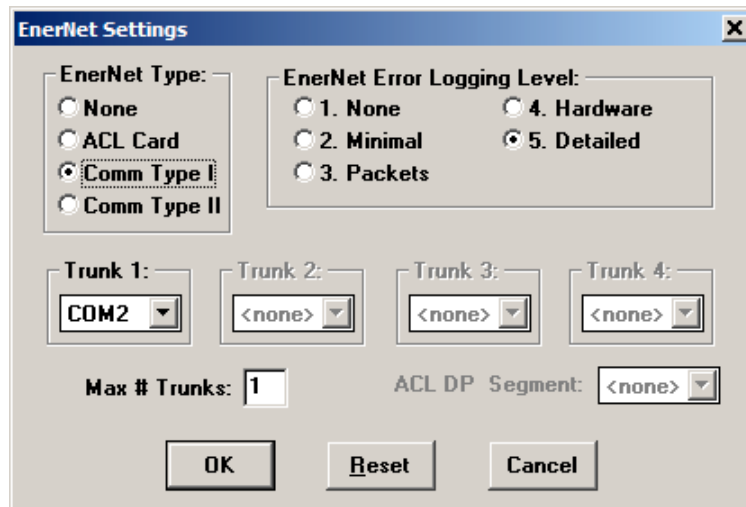
Quick Start Guide

Enertec-BAS Corporation

5711 Lacey Blvd SE, Suite 301
Lacey, WA 98503
Phone (360) 943-2952
Fax (360) 352-4112
Toll Free (800) 875-1332
sales@enerotec-bas.com
www.enerotec-bas.com

Quick Start Guide

1. Go to www.enertec-bas.com/eg485quickstart.pdf to download this PDF; it contains the links necessary to complete the following steps.
2. Download the appropriate Driver Installation Guide using one of the links below:
[Windows XP Driver Installation Guide](#)
[Windows Vista Driver Installation Guide](#)
[Windows 2000 Driver Installation Guide](#)
[Windows 7 Driver Installation Guide](#)
[Windows 8 Driver Installation Guide](#)
3. Download and run the Windows Driver installation program:
[Windows Driver Installation Program](#)
4. Insert the EnerNet Gateway USB interface cable into any available USB port.
5. Use Windows Device Manager to determine the COM port number assigned to the EnerNet Gateway (see Driver Installation Guide for assistance). BAS supports COM ports 1-9. If assigned to COM-10 or higher, change the port number to a supported port.
6. Launch BAS.
7. Select 'Access' and enter a password for Level 4 or above access.
8. Select 'System', then 'Site Configure', and 'EnerNet Settings'.
9. Edit the EnerNet Settings to match the site network configuration. Typical settings are shown below. Select 'OK' to save the configuration.



10. Select 'System' and then 'Exit' to close BAS.
11. Launch BAS. The installation is now complete.